

## **The Outreach Worker Can Help With . . .**

- A safe place to talk
- Problem solving
- Information and referrals
- Alcohol and drug related issues
- Promoting healthy relationships
- Support
- Accessing community resources
- Getting back into school
- Improving family relationships
- Developing a safety plan
- Transportation to and from appointments
- Workshops on various topics

## **Questions? Need Help? Call Today!**

**Comox Valley Youth Outreach Worker:  
250-218-0483**



**Campbell River Youth Outreach Worker:  
250-202-6665**

## **Program Goal**

To provide a support service that meets the needs of youth.

## **Referrals**

Referrals can be made by community service providers, teachers, counsellors, parents, friends, doctors, RCMP, and social workers, or youth can self refer.

## **Program Outcomes**

In 2013-2014:

- 596 connections were made with youth and their families requiring assistance.
- 86% of the youth who provided feedback said the program helped them build a better support system.
- 100% said they were using substances less or not at all (43% said not at all).

## Youth Outreach Support Program

### Comments from Clients:

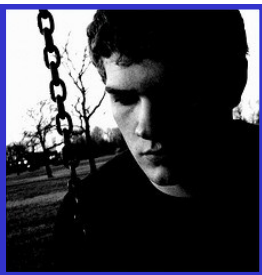
"The Outreach Worker is there for me when I need someone to talk to."

"I appreciate the support."

"I would definitely recommend this program to others."

Struggling with life issues?  
Need help or someone to talk to? Call the Youth Outreach Support Worker:

**Campbell River:**  
**250-202-6665**



**Comox Valley:**  
**250-218-0483**

Safe contact person evenings and weekends.

## Mission Statement

The John Howard Society of North Island is a charitable organization whose mission is to promote and foster safer and healthier communities by providing appropriate programs of rehabilitation, education, prevention and healing for those who need an opportunity to achieve, maintain or regain a balance within their communities.

*Campbell River:*  
201-140A 10th Ave.  
Campbell River, BC, V9W 4E3  
Tel: 250-286-0611  
Fax: 250-286-3650  
Outreach Cell: 250-202-6665

*Comox Valley:*  
1455 Cliffe Ave.  
Courtenay, BC, V9N 9A7  
Tel: 250-338-7341  
Fax: 250-338-6568  
Outreach Cell: 250-218-0483

[www.jhsni.bc.ca](http://www.jhsni.bc.ca)

*The John Howard Society of North Island's programs are situated in the traditional territories of the Kwakwaka'wakw, Nuu-chah-nulth, and Coast Salish peoples.*



# Youth Outreach Support Program

**Building Safer and Healthier Communities**

**Campbell River: 250-202-6665**  
**Comox Valley: 250-218-0483**  
[www.jhsni.bc.ca](http://www.jhsni.bc.ca)